



MID-ATLANTIC  
ACQUISITIONS LLC

LEASE  
AVAILABLE IMMEDIATELY

508 EAST MARKET ST. | LEESBURG, VA



#### Space Features

- Space available immediately
- Entire floor or suites may subdivide as small as 664 RSF
- 2nd floor - 4,056 RSF (can subdivide)
- Lower Level - 2,328 RSF (training/conf room)
- Prestigious signage available
- Plug and play space
- Multitude of amenities
- Flexible terms
- High visibility
- Hub Zone
- Ample parking

#### Description

In the heart of Leesburg, VA, 508 East Market is located near many amenities and the Leesburg Exec. Airport.



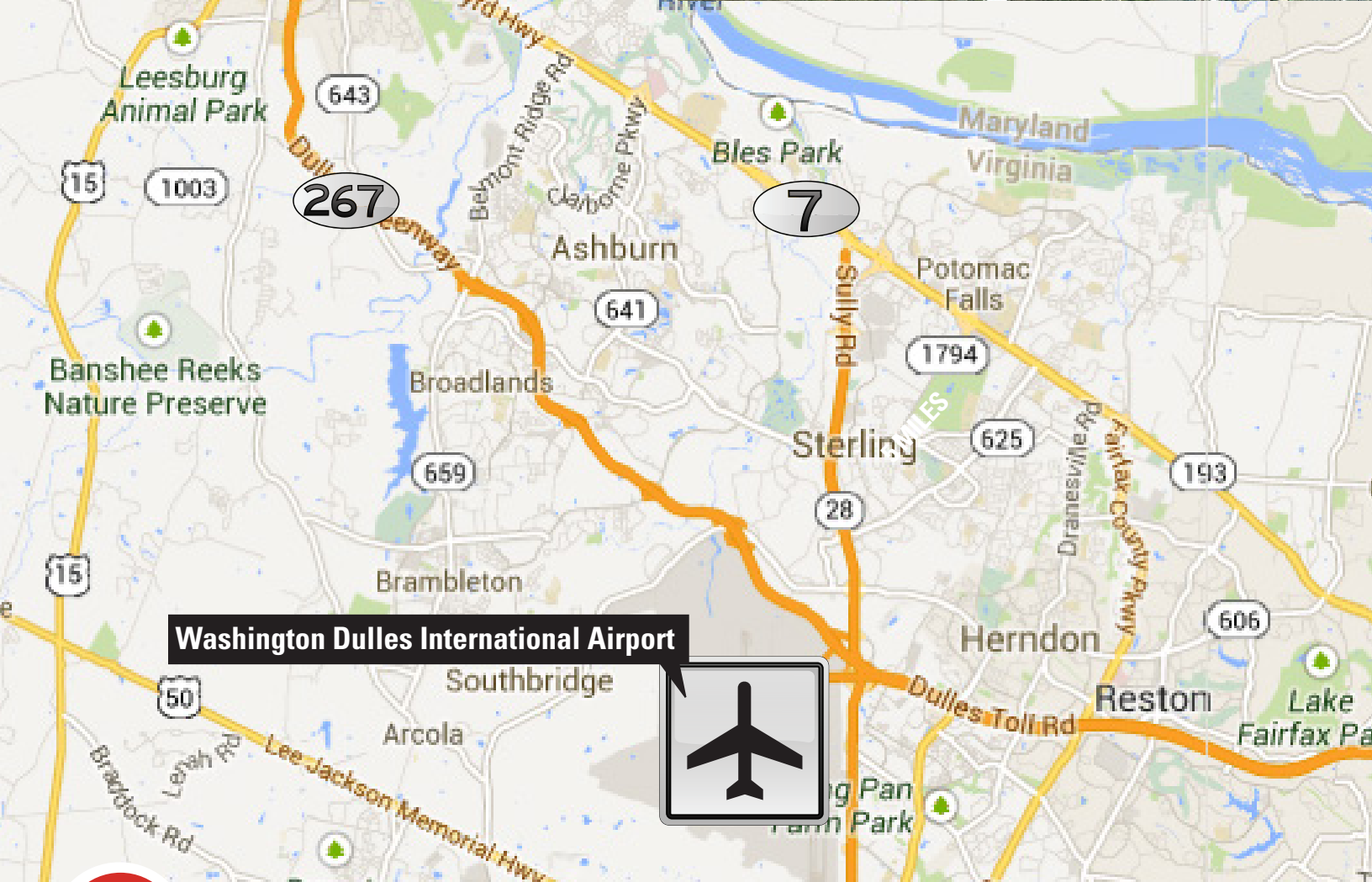
Contact **Traci Morris Cole**, 703.328.7884 or **Cornell Dayne**, 202.630.4561  
[www.midacq.com](http://www.midacq.com)



Waterford

The building is located in the heart of Leesburg along Rt. 7, within minutes from Rt. 15 and the Dulles Greenway. Located near Leesburg Executive Airport, which offers private prop and jet service, and is less than 15 minutes to Dulles International Airport.

**508 East Market St.**



**Washington Dulles International Airport**

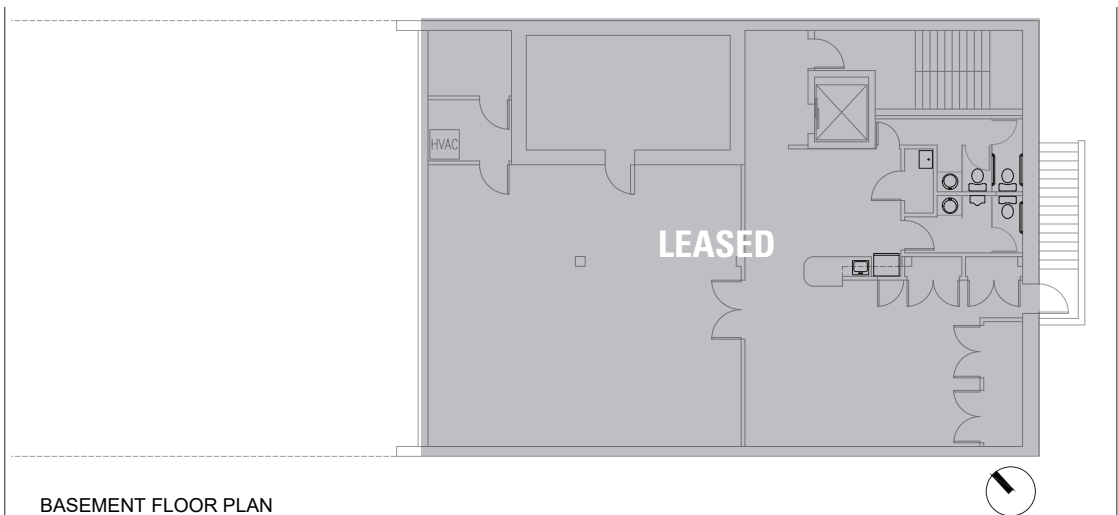


**Traci Morris Cole**, 703.328.7884 or **Cornell Dayne**, 202.630.4561  
[www.midacq.com](http://www.midacq.com)

## LOWER LEVEL (Basement)

LL 2,238 RSF  
LEASED

(training center or  
conf room) perfect  
space to convert  
to a SCIF



## FIRST FLOOR

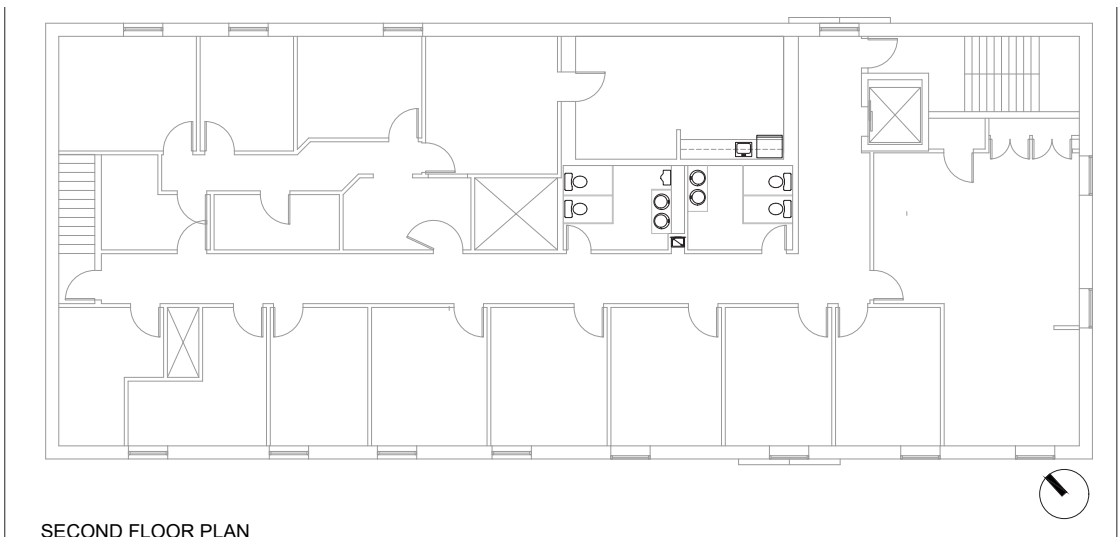
3,986 RSF  
LEASED



## SECOND FLOOR

4,131 RSF

(can subdivide  
as small as  
664 RSF)



Traci Morris Cole, 703.328.7884 or Cornell Dayne, 202.630.4561  
[www.midacq.com](http://www.midacq.com)